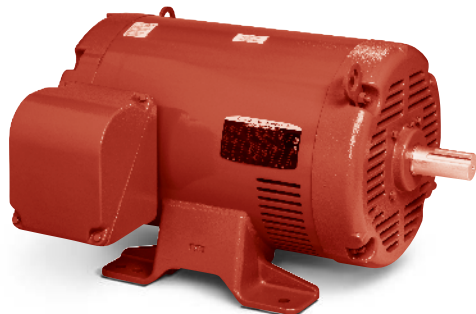


## Fire pump, three phase, ODP, foot mounted

10 thru 300 Hp

IP23



### Features:

- 1.15 SF, 40°C ambient continuous
- NEMA Design B, 60 Hz
- 230/460 and 460 Volt models rated for 50 Hz at next lower Hp
- Dual voltage motors 20 Hp and larger have 12 leads, are suitable for wye-delta or across the line start on either voltage or part winding start on low voltage
- 460V motors have 12 leads and are suitable for wye-delta, across the line or part winding start
- UL file E481231
- Exterior red paint RAL3002

### Applications:

- UL listed Fire Pump motors installed per NFPA-20

Hp	RPM	NEMA Frame	Catalog Number	Disc. Sym.	"C" Dim.	Aprx. Wt. (lb)	Full Load Efficiency	Voltage	Full Load Amps	Notes (a)
10	3600	213T	FPM3312T	PF3	16.32	121	88.5	230/460	12	1
	1800	215T	FPM3313T	PF3	16.32	130	89.5	230/460	12.7	1
15	3600	215T	FPM3314T	PF3	16.32	131	89.5	230/460	17.7	1
	1800	254T	FPM2513T	PF3	21.69	205	91	230/460	17.5	1
20	3600	254T	FPM2514T	PF3	22.25	145	90.2	230/460	23	1
	1800	256T	FPM2515T	PF3	21.69	210	91	230/460	24	1
25	3600	256T	FPM2516T	PF3	21.69	210	91	230/460	29	1
		256T	FPM2516T-2/4	PF3	21.69	206	91	200/400	34	1, 33
	1800	284TS	FPM2531TS	PF3	23.56	236	92.4	230/460	29	1
		284TS	FPM2531TS-2/4	PF3	23.56	236	92.4	200/400	34	1, 33
30	3600	284TS	FPM2534T	PF3	22.06	235	91	230/460	35	1
		284TS	FPM2534T-2/4	PF3	22.06	235	91	200/400	40	1, 33
	1800	286TS	FPM2535TS	PF3	23.69	334	92.4	230/460	36	1
		286TS	FPM2535TS-2/4	PF3	23.69	375	92.4	200/400	41	1, 33
40	3600	286TS	FPM2538T	PF3	23.56	280	91.7	230/460	45	1
		286TS	FPM2538T-2/4	PF3	23.56	254	91.7	200/400	52	1, 33
	1800	324TS	FPM2539TS	PF3	24.69	400	93	230/460	49	1
		324TS	FPM2539TS-2/4	PF3	24.69	380	93	200/400	56	1, 33
50	3600	324TS	FPM2542T	PF3	24.69	331	92.4	230/460	58	1
		324TS	FPM2542T-2/4	PF3	24.69	331	92.4	200/400	67	1, 33
	1800	326TS	FPM2543TS	PF3	25.69	385	93	230/460	60	1
		326TS	FPM2543TS-2/4	PF3	25.69	385	93	200/400	70	1, 33
60	3600	326TS	FPM2546T	PF3	25.69	385	93	230/460	68	1
		326TS	FPM2546T-2/4	PF3	25.69	385	93	200/400	78	1, 33
	1800	364TS	FPM2547TS	PF3	25.81	480	93.6	230/460	72	1
		364TS	FPM2547TS-2/4	PF3	27.94	480	93.6	200/400	83	1, 33
75	3600	364TS	FPM2549T	PF3	27.94	485	93	230/460	84	1
		364TS	FPM2549T-2/4	PF3	27.94	485	93	200/400	96	1, 33
	1800	365TS	FPM2551TS	PF3	29.94	570	94.1	230/460	87	1
		365TS	FPM2551TS-2/4	PF3	29.94	570	94.1	200/400	100	1, 33
100	3600	365TS	FPM2550T	PF3	28.94	533	93	230/460	113	1
		365TS	FPM2550T-2/4	PF3	28.94	533	93	200/400	130	1, 33
	1800	404TS	FPM2555TS	PF3	31.85	597	94.1	230/460	117	1
		404TS	FPM2555TS-2/4	PF3	31.85	597	94.1	200/400	135	1, 33
125	3600	404TS	FPM2554T-4	PF3	31.85	660	93.6	460	138	1
	1800	405TS	FPM2559TS-4	PF3	33.60	590	94.5	460	145	1
150	3600	405TS	FPM2556T-4	PF3	31.85	600	93.6	460	164	1
	1800	444TS	FPM2558TS-4	PF3	35.88	1579	95	460	167	
200	3600	444TS	FPM2562T-4	PF3	35.88	1449	94.5	460	232	
	1800	445TS	FPM2563TS-4	PF3	35.88	1718	95	460	224	
250	3600	445TS	FPM2565T-4	PF3	35.88	1737	94.5	460	288	
	1800	445TS	FPM2566TS-4	PF3	35.88	1844	95.4	460	272	
300	3600	445TS	FPM2568T-4	PF3	35.88	1697	95	460	339	

(a) See notes on inside back flap.

■ Cast iron frame

Information

Single phase

General purpose

Severe duty

Large AC

Washdown duty

Explosion proof

Pump

HVAC

Farm duty

**Fire pump, three phase, ODP, foot mounted**

Hp	RPM	NEMA Frame	Catalog Number	Price	Disc. Sym.	"C" Dim.	Aprx. Wt. (lb)	Full Load Efficiency	Voltage	Full Load Amps	Notes (a)
<b>575 volt</b>											
20	3600	254T	<b>FPM2514T-5</b>		PF3	22.25	145	90.2	575	18.5	
	1800	256T	<b>FPM2515T-5</b>		PF3	21.69	231	91.0	575	19.6	
25	3600	256T	<b>FPM2516T-5</b>		PF3	21.69	223	91.0	575	23	
	1800	284TS	<b>FPM2531TS-5</b>		PF3	23.56	320	92.4	575	23	
30	3600	284TS	<b>FPM2534T-5</b>		PF3	22.06	240	91.0	575	28	
	1800	286TS	<b>FPM2535TS-5</b>		PF3	23.69	420	92.4	575	29	
40	3600	286TS	<b>FPM2538T-5</b>		PF3	23.56	287	91.7	575	36	
	1800	324TS	<b>FPM2539TS-5</b>		PF3	24.69	400	93.0	575	39	
50	3600	324TS	<b>FPM2542T-5</b>		PF3	24.69	449	92.4	575	46	
	1800	326TS	<b>FPM2543TS-5</b>		PF3	25.69	452	93.0	575	49	
60	3600	326TS	<b>FPM2546T-5</b>		PF3	25.69	449	93.0	575	54	
	1800	364TS	<b>FPM2547TS-5</b>		PF3	25.81	480	93.6	575	57	
75	3600	364TS	<b>FPM2549T-5</b>		PF3	25.81	480	93.0	575	67	
	1800	365TS	<b>FPM2551TS-5</b>		PF3	27.81	573	94.1	575	69	
100	3600	365TS	<b>FPM2550T-5</b>		PF3	26.81	525	93.0	575	90	
	1800	404TS	<b>FPM2555TS-5</b>		PF3	31.85	648	94.1	575	93	

(a) See notes on inside back flap.

Information

Single phase

General purpose

Severe duty

Large AC

Washdown duty

Explosion proof

Pump

HVAC

Farm duty